

浙江中醫藥大學



85

——2016-2017 学年第二学期期末考试试卷抽查情况通报

---

---

---

## 2016-2017 学年第二学期期末考试试卷抽查情况通报

2016- 2017

10            18            983

1.		0.53	0.92	0.697		
0.80	2	11.11%	0.70	0.79	6	33.33%
	0.50	0.69	"	"	6	55.55%
2		0.10	0.44	0.265		

---

0.2	5	27.78%	0.30	"	"	6
		33.33%				
	3		0.68	0.78	0.748	0.70
0.79	17	94.44%				

1.

2

3. 6 9

4. 5

5.

6.

2

5

0.2 " "

0.1

1.

---

“ ”

2

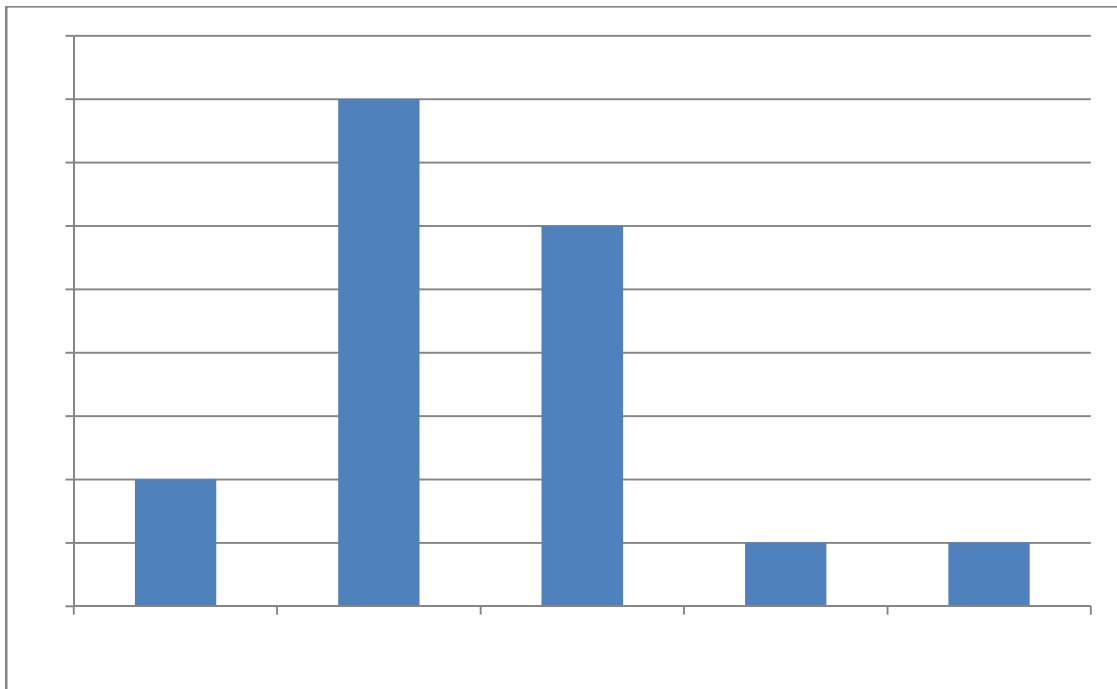
3.

4.

5.

1.

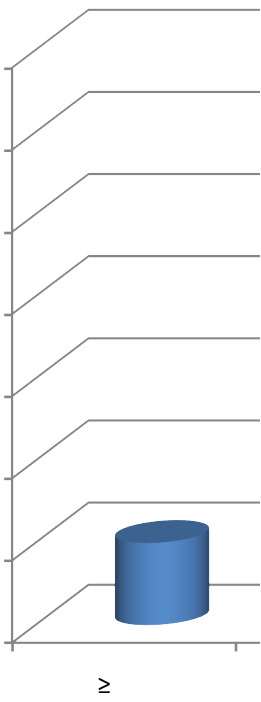
"	" 0.7
	0.85
	0.5
	0.01 0.99
0.5	



---

2

0.4	
0.3-0.39	
0.2-0.29	
0.2	



3.

0.9-1.0		0	0.00%
0.8-0.89		0	0.00%
0.7-0.79		17	94.44%
0.6-0.69		1	5.56%
0.5-0.59	10	0	0.00%
0.5		0	0.00%
		18	100.00%

